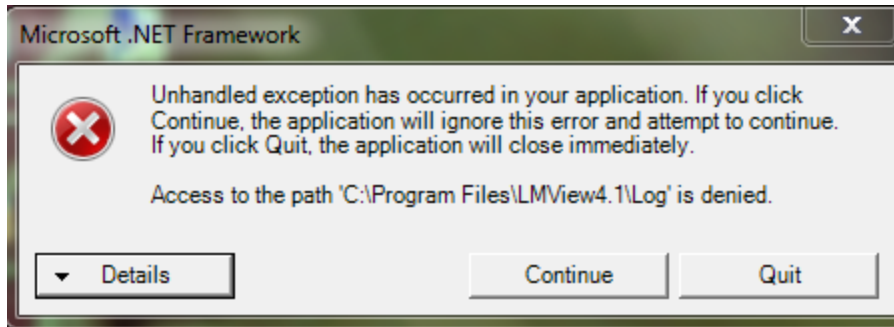


# FAQ of LMView4.0

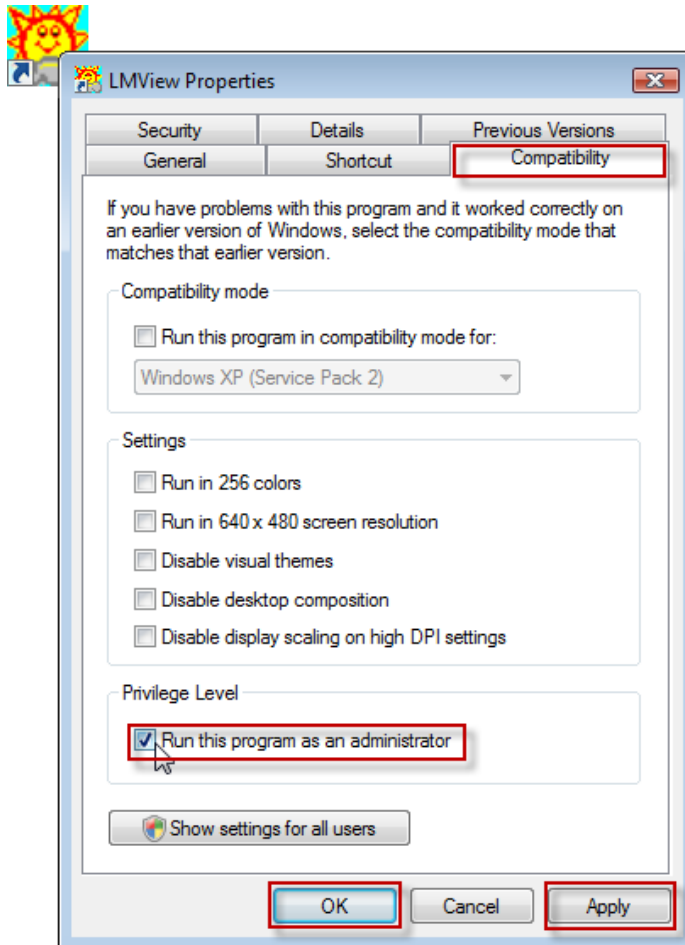
---

(1) Problem : 'System.UnauthorizedAccessException: Access to the path 'C:\Program Files\LMView4.1\Log' is denied.



## Probable Causes:

- Authorization problem into Windows Vista and 7 OS.



#### Suggestive Action:

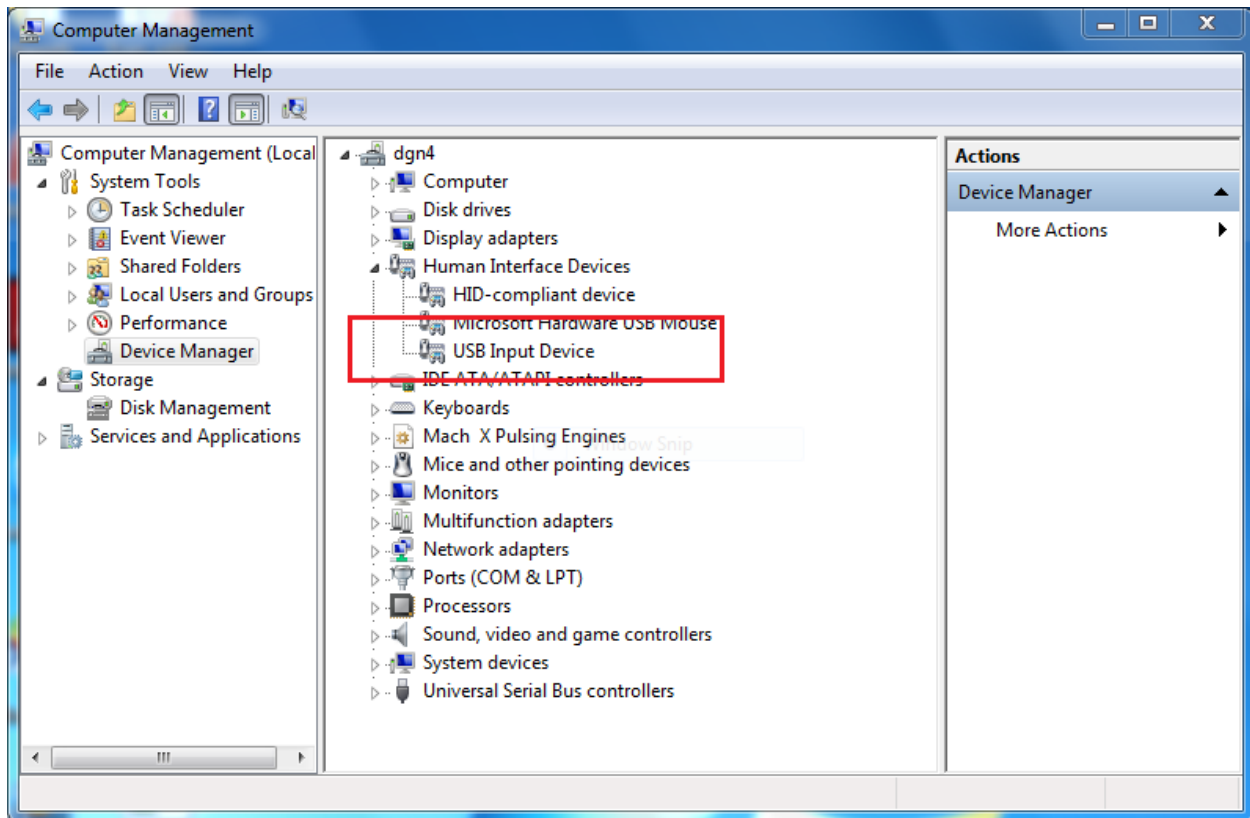
To run LMView4.1 application on Windows Vista or Windows 7 OS. First time do below process.

- Right click on LMView.exe from desktop or Start -> G-Tek Corporation -> LMView2.0 -> LMView or C:\Program Files\LMView2.0\LMView.exe and click on properties like below.
- Above command open below LMView Properties window in which select Compatibility tab. In Compatibility tab check 'Run this program as an administrator' properties and then click 'Apply' button and at last click 'OK' button to complete process.

(2) Problem : 'Communication Error C0006.

#### Probable Cuses:

- There is different cause for generate this error. So, we give some error check for resolve this problem.



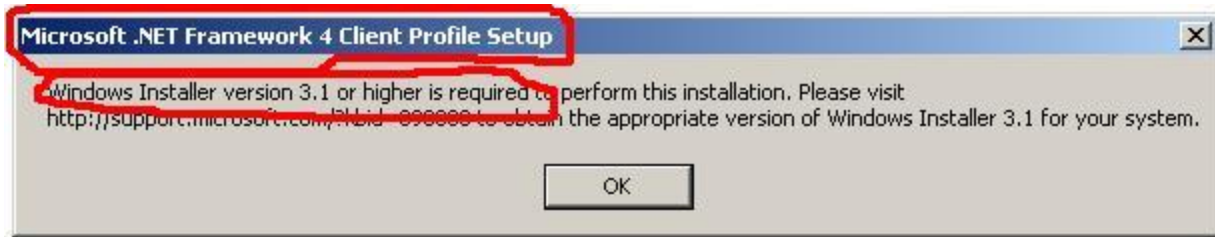
#### Suggestive Action:

Communication does not establish due to device driver (USB Input Device) does not installed successfully.

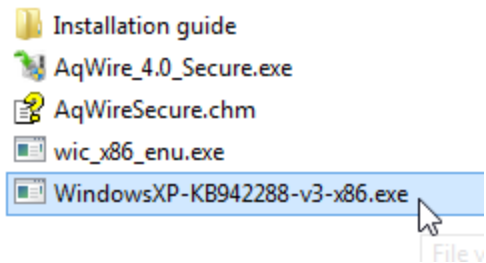
For verify device driver installed properly just do below exercise :

- Right click to MyComputer and select Manage, it will open Computer Management window.
- Select Device Manager from left side panel, it will open Device Manager properties into right side panel.
- If device driver installed properly then it will show into **Human Interface Devices** list as **USB Input Device** like in above image.
- If device driver not installed properly then it will not show you **USB Input Device** into **Human Interface Devices** list.

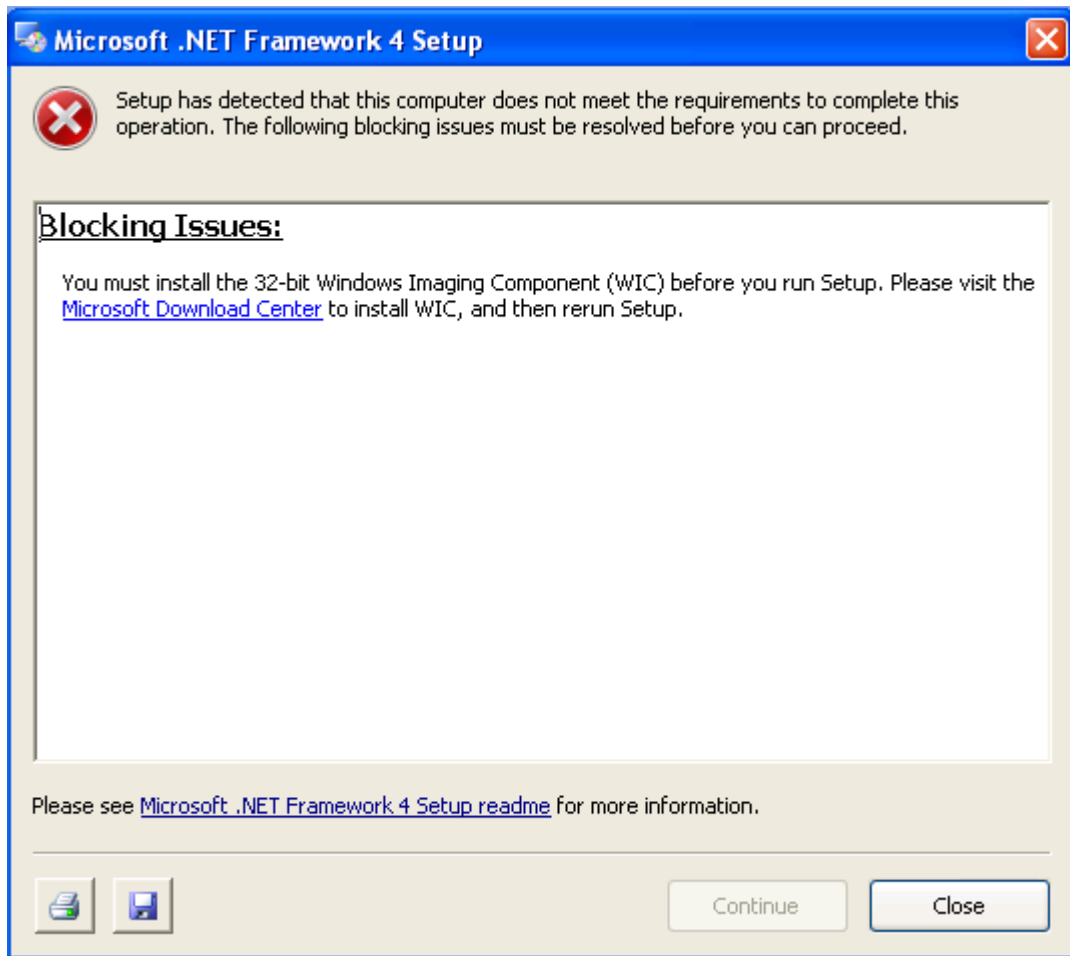
(3) Problem : Windows Installer version 3.1 or higher is required error during windows framework installation.



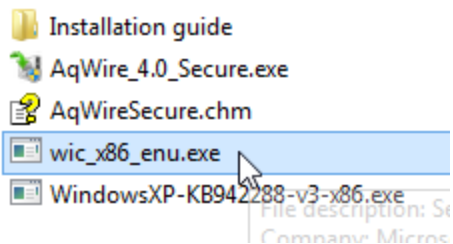
Probable Causes: This error generates during windows framework 4.0 client installation when required windows installer version 3.1 or higher not installed in system. This error generates due to windows installer version less than 3.1. Normally this error generates into system which have windows XP service pack 2 OS. Install windows installer from installation folder.



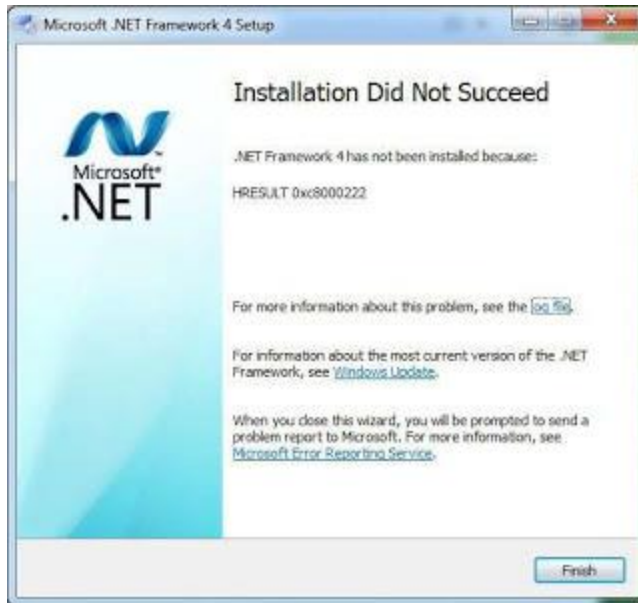
(4) Problem : Windows Imaging Component (WIC) error during windows framework installation.



Probable Causes: This error generates during windows framework installation when WIC not available in system. This error generates due to windows imaging component does not available in system. Normally this error generates into system which have windows XP service pack 2 OS. Install windows imaging component from installation folder.



(5) Problem : .NET Framework 4 has not been installed because: HRESULT 0xc8000222



Probable Causes:

- 1.) open "cmd"
- 2.) type in command "net stop "WuAuServ" (disable windows update)
- 3.) Head over to Run ( Win+R ) and type in "%windir%" (this command line enable you to head over to your microsoft windows system folder)
- 4.) Find the folder "SoftwareDistribution" and rename it as "SDold"
- 5.) Then, go back the previous command prompt and also run the command line "net start WuAuServ"
- 6.) At this point, try to install. NET Framework again.